

COOPERATIVE EXTENSION SERVICE
U. S. DEPARTMENT OF AGRICULTURE
KANSAS STATE UNIVERSITY
MANHATTAN, KANSAS 66506
OFFICIAL BUSINESS
PENALTY FOR PRIVATE USE, \$300



KANSAS DAIRY EXTENSION NEWS

VOLUME 14(4)

JULY-AUGUST 1993

JULY 27

DAIRY FIELD DAY
Ron & Shari Strauss
Junction City

"Advanced Technology
in Dairy Equipment"

AUGUST 13-14

JUNIOR DAIRY SHOW
Kenwood Park
Salina

(Entries Due by Aug. 9)



Let's go to the...



"Kansas Summer Dairy Field Day" Tuesday, July 27, 1993



**Ron & Shari Strauss "Rockie Top Holsteins"
Junction City**

-ADVANCED TECHNOLOGY IN DAIRY EQUIPMENT-

-Program-

9:30 am Registration
10:30 am Presentation: Equipment
 Dealers
11:00 am Open Panel Discussion

Noon: Complimentary Lunch
1:00 pm Body Condition Scoring
 + Tours
2:30 pm Door Prizes

*****COMMERCIAL EXHIBIT TENT**

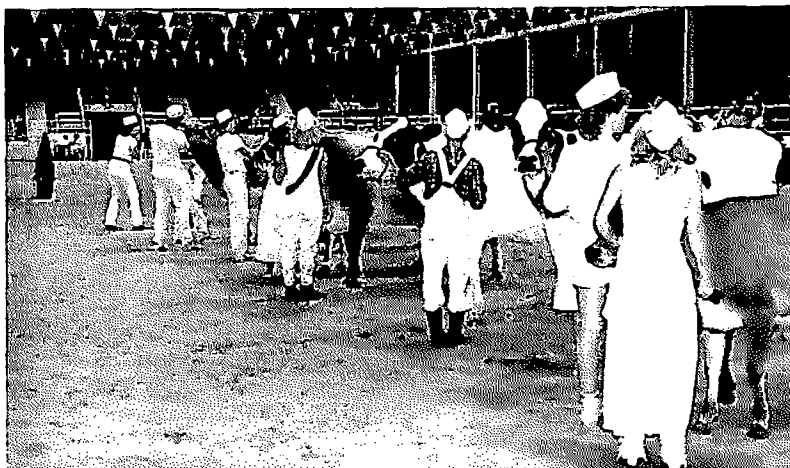
*****COW GROOMING DEMO FOR YOUTH**

—————DIRECTIONS—————

I-70 exit 295 (US 77), 1/10 mi South, 3/4 mi West, 1/2 mi North
(Watch for signs and tents)

Kansas All Breeds Junior Dairy Show

Salina, KS
 Kenwood Park
 August 13-14, 1993



The Kansas All Breeds Junior Dairy Show will be held in Kenwood Park, Salina, Kansas, on August 13th and 14th 1993. The show is co-sponsored by the Agricultural Division of the Salina Area Chamber of Commerce and the Kansas Interbreed Dairy Council.

SHOW STARTS FRIDAY - Aug. 13th
ENTRIES MUST BE IN PLACE BY 4 P.M.

BANQUET - 6 P.M. KENWOOD HALL

TICKETS AVAILABLE ON THE GROUNDS
 BEFORE THE BANQUET

• Fitting and Showing Following Banquet •

The Show will be limited to 4-H and FFA members who are enrolled in a bonafide dairy project and National Junior Program members who have reached their 7th birthday before January 1, 1993 or are not older than 19 on January 1, 1993. However, older members of the respective breed National Junior Programs will qualify for this show, except fitting and showing.

REGISTERED
 AND HIGH GRADE CATTLE
 TO BE SHOWN TOGETHER WITH GRADE
 RECEIVING 25% LESS PREMIUM

BREEDS ELIGIBLE

AYRSHIRE • BROWN SWISS • GUERNSEY
 HOLSTEIN • JERSEY • MILKING SHORTHORN

ENTRY CLASSES

Class 1	Jr. Heifer Calf	Class 7	Sr. Yearling
Class 2	Intermediate Heifer Calf	Class 8	Jr 2 yr olds
Class 3	Sr. Heifer Calf	Class 9	Sr 2 yr olds
Class 4	Summer Yearling	Class 10	3 yr olds
Class 5	Jr. Yearling	Class 11	4 yr olds
Class 6	Winter Yearling	Class 12	Aged Cow
		Class 13	Dry Cow

CASH PREMIUMS

FOR BLUE, RED AND WHITE RIBBONS

Class 14	Beginners Fitting & Showing (7 - 11 yrs. first time)
Class 15	Novice Fitting & Showing (7 - 11 yr. olds)
Class 16	Jr. Fitting & Showing (12 - 14 yr. olds)
Class 17	Sr. Fitting and Showing (15 yrs. & older)
Class 18	County Herd (5 animals any age and breed - at least 2 exhibitors.) (A family is one exhibitor)

OWNERSHIP & HEALTH REGULATIONS

Each animal must have health certificate signed by a veterinarian. Health requirements same as for Kansas State Fair on cows and calves...and be registered in their own name, by July 1, 1993. In case of grades, agent or teacher must certify ownership is correct.



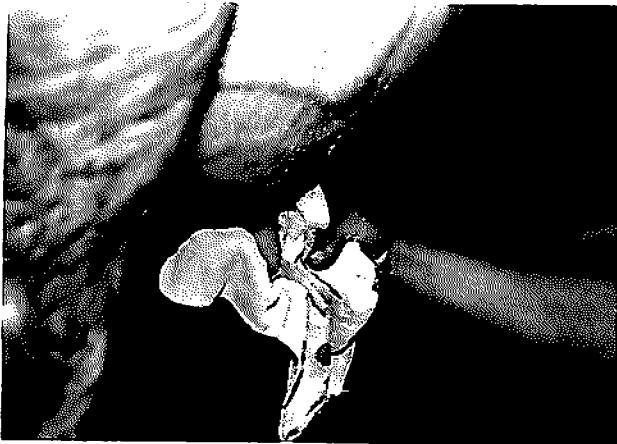
Many special awards will be given by Breed Associations, Breeders and others.

Entries will be accepted until August 9, 1993.
 Mail entries to the Chamber of Commerce,
 PO Box 586, Salina, Kansas 67402-0586

C-L-E-A-N

AND

D-R-Y



CLEAN AND DRY... are the "Buzz" words when it comes to attacking a somatic cell problem (SCC), and the words apply 24-hr a day whether in the parlor or in the lot.

Cows need about 30 seconds of "Hands-On" stimulation of the teats to assure adequate let-down (oxytocin release). While we are at it, we might just as well apply a pre-dip and sanitize the teats giving special attention to get the teat ends clean. Spraying on the pre-dip is preferred to dipping since dirty teats will contaminate the dip cup. The use of rubber or plastic gloves is recommended.

The job of prepping is completed by thoroughly drying each teat with a single service towel. Cloth towels (one per cow) are a big favorite on many dairies and are washed and sanitized after each use.

Then, take full advantage of let-down and put the claw on right away! Adopt the motto... "Prep one – put one on." Let-down pressure begins to wane after five (5) minutes or so. If there is a delay of several minutes before attaching the claw, the amount of residual milk will increase and increase the chance of clinical mastitis and high SCC.

Summary - Managed Milking

1. Remove two streams
2. Pre-dip – 30 seconds massage
3. Dry – single service towel
4. Attach claw
5. Minimize liner slips
6. Remove claw after milk-out
7. Teat dip
8. Rinse teat cups and bow!
9. Allow claw to drain before milking next cow



Cooperative Extension Service

Extension Animal Sciences and Industry
Call Hall
Manhattan, Kansas 66506-1600
913-532-5654
FAX: 913-532-5681

Dear Producer:

There's something for everyone at this year's **SUMMER DAIRY FIELD DAY** at Ron & Shari Strauss' Rockie Top Dairy at Junction City, July 27.

It's time for 4-H, FFA, and Junior members to get their entries in for the **KANSAS ALL BREEDS JUNIOR DAIRY SHOW**, August 13-14 at Salina.

Sincerely yours,

Edward P. Call

James R. Dunham

Extension Specialists, Dairy Science