

Seminar Information

The 2021 Fall Ranch Management Seminar Series include a series of presentations focused on enhancing profit in beef production and a 'Town Hall' question-and-answer session where producers can ask questions to local/district and state extension specialists.

Producers are encouraged to bring their questions on cow-calf animal health, nutrition, genetics, reproduction and management to the session.

Please RSVP to your selected location contacts by at least a week prior to the event. Registration fees and payment forms may vary by site. Contact your local host contact for registration/RSVP details. Meal, if provided, is included in the registration fee.

Online updates about the series can be found at KSUBeef.org. If necessary, the option to conduct the meetings virtually will be made by the RSVP date for each respective location.

2021 K-State Fall Ranch Management Dates & Locations

Cassoday October 26, 2021
6 - 8 pm

Larned November 10, 2021
6 - 8 pm

For more information, contact:

Lois Schreiner
Department of Animal
Sciences and Industry
785-532-1267
lschrein@ksu.edu

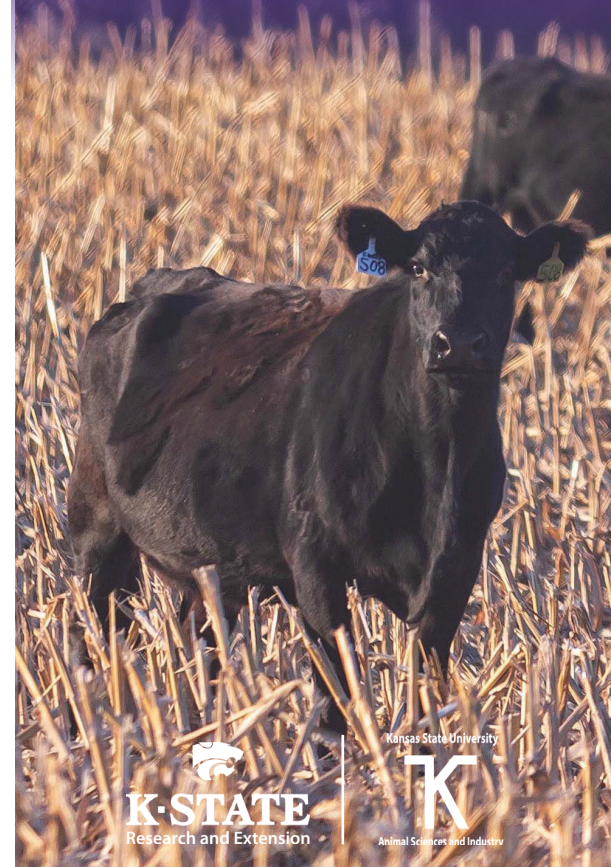
Dale Blasi
Department of Animal
Sciences and Industry
785-532-5427
dblasi@ksu.edu



Kansas State University Agricultural Experiment Station and Cooperative Extension Service
K-State Research and Extension is an equal opportunity provider and employer. Issued in
furtherance of Cooperative Extension Work, Acts of May 8 and June 30, 1914, as amended. Kansas
State University, County Extension Councils, Extension Districts, and United States Department of
Agriculture Cooperating, J. Ernest Minton, Interim Director

K-STATE FALL RANCH MANAGEMENT SEMINAR SERIES

OCTOBER-NOVEMBER 2021



2021 K-State Fall Ranch Management Program

5:30 pm Meal

6 pm Town Hall: What's on your mind? Open questions and answers.

6:30 pm Late Fall Supplementation Programs for Your Cow Herd
Justin Waggoner, KSU Extension Specialist

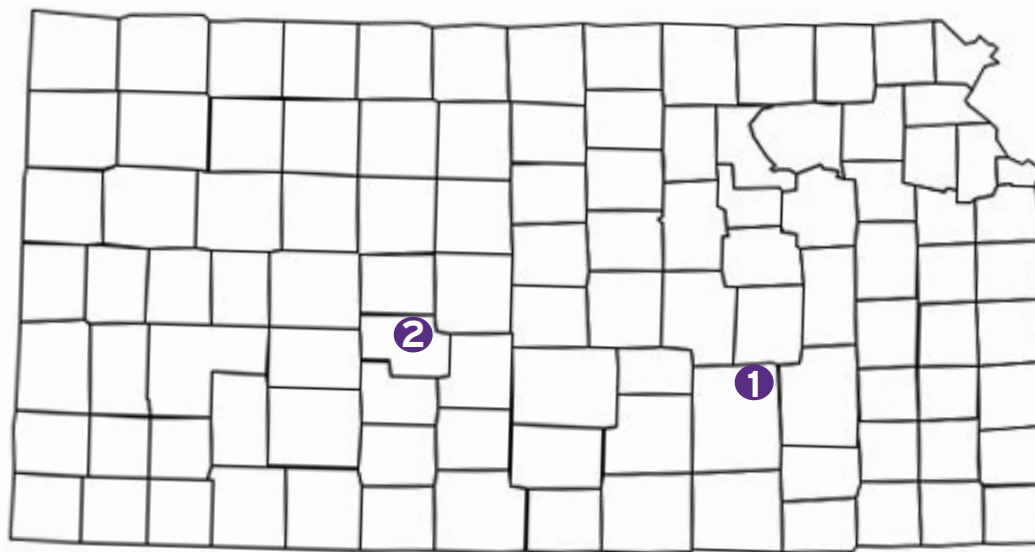
6:50 pm Forage Sampling is Important
District and County Agents

7:10 pm Why Vaccines Seem to Fail
Gregg Hanzlicek, KSU Clinical Associate Professor

7:30 pm Alternative Meats Discussion and Tasting
Lane Egger, KSU Meat Science Extension Assistant

8 pm Wrap up

2021 K-State Fall Ranch Management Locations



2021 K-State Fall Ranch Management Contacts

1. Cassoday

Hosted by: Flint Hills District,
Greenwood County and
Butler County

Date: Tuesday, October 26, 2021
6 - 8 pm
(Meal to start at 5:30)

Location: Cassoday Elementary School
200 Washington Street
Cassoday, KS 66842

RSVP by October 21 to:
Shannon Spencer
620-767-5136
spencer@ksu.edu

2. Larned

Hosted by: Pawnee County, Hodgeman
County and 21-Central
District

Date: Wednesday, Nov. 10, 2021
6 - 8 pm
(Meal to start at 5:30)

Location: J A Haas Building
403 East 18th Street
Larned, KS 67550

RSVP by November 4 to:
Pawnee Co. Extension Office
620-285-6901