

Swine Skillathon

Youth will have the opportunity to test their knowledge and compete for prizes in a Swine Skillathon. This highly interactive event will offer three age divisions: 7-10, 11-14, and 15-18. The skillathon will be open from 1 to 3 p.m. on Friday in the show barn. During that time frame, it will be come-and-go and youth may participate at their convenience. It will take approximately 30 minutes for youth to complete the skillathon stations. After the completion of the skillathon contest, all youth and adults will have the opportunity to view the answers and other age division's stations. Prizes will be given to Swine Classic participants only.

Photography Contest

Youth may submit up to two swine-related photos for the photography contest. The photo entries are to be taken by the exhibitor. Check-in will be at 1 p.m. on Friday. Photos should be 8x10 size and should not be framed or matted. Photos will be placed in plastic sleeves and displayed throughout the weekend. We assume no responsibility for lost or damaged photos. There will be no age group divisions. Prizes will be given to the Champion and Reserve Champion "The People's Choice" award. Voting will be open at 1 p.m. and close at the conclusion of Showmanship on Friday.

Award Presentations

Awards for all educational contests will be presented on Saturday morning between the prospect and market shows.

Photo Release

By submitting a show entry, participants authorize Kansas State University, and/or K-State Research and Extension or its assignees to photograph and record their image and/or voice (or that of their child under age 18) for use in current or future research, educational, promotional programs, and printed or electronic publications. Families understand the results for the show will be shared via an online platform. To withhold consent, email adhayes@ksu.edu to communicate those wishes.

Housing

Four Points by Sheraton 785-539-5311
Bluement Hotel 785-473-7091
Fairfield Inn 785-539-2400
Holiday Inn Express 785-320-7454
Holiday Inn at the Campus..... 785-539-7531
Hampton Inn 785-539-5000
Comfort Inn 785-770-8000

Sponsors

The Kansas Swine Classic is sponsored by the K-State Research and Extension Service and the Kansas State University Department of Animal Sciences and Industry.

'19 - '20 Bob Hines Kansas Swine Classic Donors

Whole Hog Club (\$1,000 or more)

Kansas State University
Department of Animal Sciences & Industry
www.KSUswine.org

Kansas Pork Association
www.kspork.org

Fourth and Pomeroy Associates, Clay Center
Rod Bohn - 785-632-2141
keyfeedsfp@sbcglobal.net

Loin Club (\$200 or more)

David Shipman Family, Manhattan

Valley Vet Supply, Marysville
www.valleyvet.com

Purina Honor Show Chow, Seneca

Gary Niehues
GJNiehues@landolakes.com

Essential Show Feeds, York, NE

Steve Parks
scparks@nutritionservices.biz

Ham Club (\$100+)

Bob and Treva Hines, Manhattan
Farm Credit Associations of Kansas
Richard Gottlob Family, Arkansas City
Kody and Becky Chase, Abilene
Tom and Angel Oakley, Wamego
Fink Farms, Robert Fink, Wamego

Bacon Club (\$50+)

Mike Tokach Family, Abilene
Joel DeRouchey Family, Wamego
Dave Nichols Family, Manhattan
Jerry Dreher Family, Iola

Kansas State University is committed to making its services, activities and programs accessible to all participants. If you have special requirements due to physical, vision, or hearing disability, contact Joel DeRouchey at 785-532-2280.

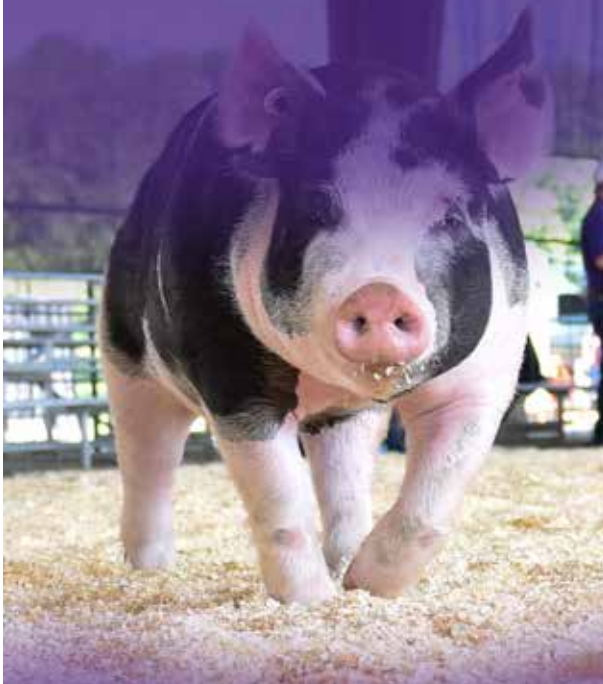
Kansas State University Agricultural Experiment Station and Cooperative Extension Service

K-State Research and Extension is an equal opportunity provider and employer. Issued in furtherance of Cooperative Extension Work, Acts of May 8 and June 30, 1914, as amended. Kansas State University, County Extension Councils, Extension Districts, and United States Department of Agriculture Cooperating, J. Ernest Minton, Director.

36th Annual DR. BOB HINES KANSAS SWINE CLASSIC

July 9-10, 2021

Friday and Saturday
Riley County Fairgrounds
CiCo Park
Manhattan, Kansas




K-STATE
Research and Extension

Kansas State University
K
Animal Sciences and Industry

**Swine Classic Program
Riley County Fairgrounds, CiCo Park
Manhattan, Kansas**

Tuesday, June 15

5 p.m. Online Entries Due
Postmark Payment

Friday, July 9

8:30 a.m. Barn open for arrival
Noon. All pigs in place
1 p.m. Swine Photo Check-in by the show ring
1 – 3 p.m. Skillathon in the show ring
4 p.m. Ice cream party by the show ring
5:30 p.m. Showmanship contests

Saturday, July 10

8 a.m. Prospect Pig Show followed by
Barrow and Gilt Market Pig Show

ENTRY LINK: bit.ly/21SwineClassicEntry



**ENTRY CHECKS MUST BE
POSTMARKED BY JUNE 15, 2021**

Kansas Swine Classic
Attn: Lois Schreiner
218 Weber Hall
1424 Clafflin Road
Kansas State University
Manhattan, KS 66506

Make check payable to: Kansas Swine Club

General Rules
ENTRIES ARE DUE BY JUNE 15, 2021

Judge: Jeremy Cantrell, Perkins, OK
Superintendents: Joel DeRouchey and Lexie Hayes
Kansas State University, Weber Hall, Manhattan, KS 66506
For information call: 785-532-6533

1. Online entries are required at bit.ly/21SwineClassicEntry. Checks to accompany entry receipt must be postmarked by June 15, 2021.
2. All market pigs (weighing between 220 to 290 lbs) will be divided into classes based on weight. There will be separate classes for all breed classes with at least 3 entries and crossbred classes. All breed classes without 3 entries will be shown as "All other breeds; AOB". All classes will be established by weight at the show.
3. All prospect pigs (weighing between 125 to 219 lbs) will be divided into classes based on weight. There will be separate classes for all breeds with at least 3 entries and crossbred classes. All breeds with less than 3 entries will be shown as AOB. The minimum weight for prospect pigs to show is 125 lbs at show weigh-in.
4. Registration papers will be required on all purebreds shown in the prospect and market show. The exhibitor's name must be listed on the registration paper. A copy of registration papers can be provided with entry submission or at weigh-in. No exceptions.
5. All pigs must be owned by the exhibitor and tagged with official Kansas 4-H ear tags by June 15, 2021.
6. An exhibitor may enter up to four pigs.
7. Pigs will be penned off the trailer. 2 pigs/pen. Due to barn capacity and limited pen space, show management reserves the right to reduce the number of entries allowed per family.
8. A limited number of families may be granted permission to show off of the trailer. Those interested can indicate this in the online entry system.
9. KSU and local health guidelines regarding COVID-19 at the time of this show will be followed. This may include requiring masks and social distancing. All exhibitors, participants and attendees will be expected to comply with these guidelines.
10. This is a non-terminal show and all pigs must be removed from fairgrounds upon completion of the show.

Swine Showmanship

The showmanship contest will be open to any Kansas Swine Classic exhibitor. Swine exhibited in the showmanship classes must be owned by the showmanship exhibitor except for the Future K-Staters division in which a pig entered by a 4-Her must be used. Showmanship will be divided into three divisions. Divisions will be determined by age as of January 1, 2021.

- Senior Division — 15-18 years of age
- Intermediate Division — 11-14 years of age
- Junior Division — 7-10 years of age
- Future K-Staters — Youth who are not exhibitors

Awards will be presented to the Top 5 showmen in the Senior, Intermediate and Junior divisions.

Market Show Awards

Premiums will be given to the top half of each class.

- Grand Champion Market Pig — \$200 plus buckle
- Reserve Champion Market Pig — \$150
- 3rd Overall Market Pig — \$125
- 4th Overall Market Pig — \$100
- 5th Overall Market Pig — \$75

Prospect Show Awards

Premiums will be given to the top half of each class.

- Grand Champion Prospect Pig — \$100 plus buckle
- Reserve Champion Prospect Pig — \$75
- 3rd Overall Prospect — \$60
- 4th Overall Prospect — \$50
- 5th Overall Prospect — \$40

Location

The swine show will be at CiCo Park, Riley County Fairgrounds, Manhattan, Kansas.

Questions

Questions on the program can be answered by the following people:

- Joel DeRouchey 785-532-2280
- Lexie Hayes 785-532-1264
- Lois Schreiner 785-532-1267